

Laurens Ladder



Soldier courses when done well, enhance any building, when done badly at best they are a distraction to the eye, at worst compromise structural integrity.

Soldier courses are generally laid into an existing defined gap. To ensure alignment careful gauging and constant monitoring with string and level is required. Once started it is not advisable to leave a soldier course until the whole course is completed to avoid movement in the bricks laid.

Soldier courses laid on a steel lintel and damp-proof course make for a challenging task.

Laurens Ladder provides the complete solution. Due to the extra time taken to lay soldier courses a premium is paid, therefore the bricklayer who can lay them quickly and perfectly will benefit most. Doing the job once should earn a profit, doing the job twice means a loss.





Ladder sections easily connected



Securing ladder sections



Clamps adjustable for cavity width



Gauge set by aligning rung



Two clamps secure Laurens Ladder



Adjuster screws allow the face of Laurens Ladder to be tilted



Laurens Ladder covers 49 courses in this application, (51 courses in band courses)



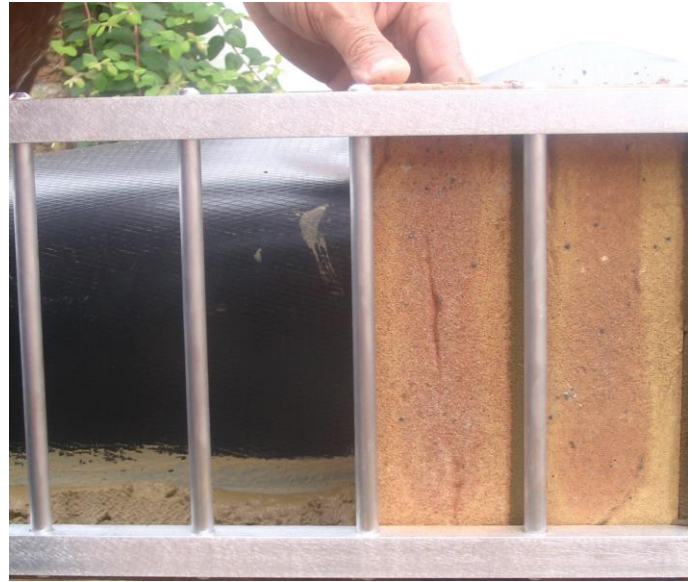
Each brick is laid behind Laurens Ladder using the top bar as a level and the vertical bar as a mortar joint gauge.



Top and bottom bars hold each brick in place.



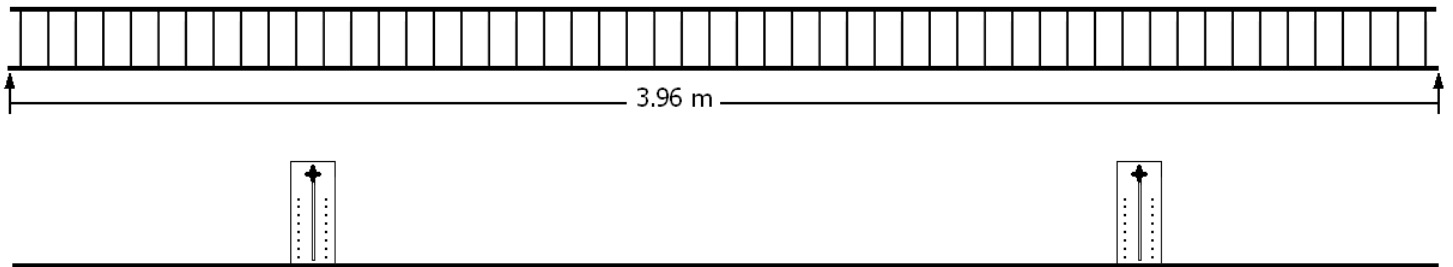
Each course accurately positioned and held in place.



No need to check with a spirit level, align each brick with top bar.



Courses are laid more quickly and accurately, and Laurens Ladder holds them in place until set.



**BLAKES
BUILDING
PROFILES**

**THE
ORIGINAL
BRICKIE'S
BEST FRIEND**

**Unit A, Castle Industrial Park
Pear Tree Lane
Newbury
RG14 2EZ
0118 981 2872
blakesbuildingprofiles.co.uk**