

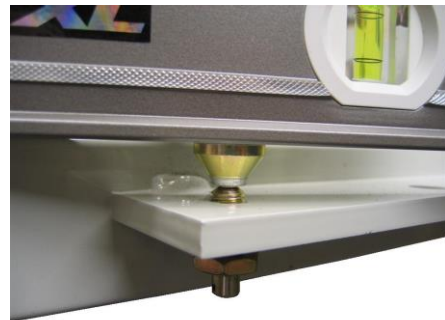
**BLAKES
BUILDING
PROFILES**

**THE
ORIGINAL
BRICKIE'S
BEST FRIEND**

**Unit A, Castle Industrial Park
Pear Tree Lane
Newbury
RG14 2EZ
0118 981 2872
blakesbuildingprofiles.co.uk**

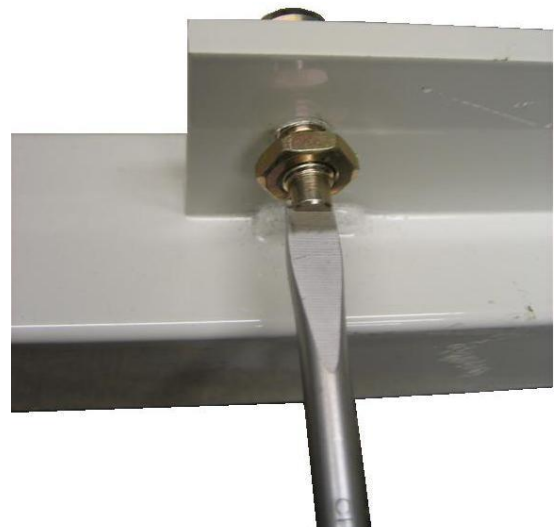
Calibrating Setting Screws – Blakes External Profile

It is important that the top 2 setting screws are adjusted accurately. When set at the factory, the profile will stand off the corner 1.5mm which is the optimum setting for 1.0mm line. The profile can be set with a greater spacing but BOTH setting screws must be set to the same distance.



Slacken the lock nut on the screw to be adjusted and place the Profile on a flat surface with the wobbly foot facing upwards. Place a spirit level or other straight edge diagonally over the profile stalk and the foot of the setting screw to be adjusted as shown above.

Either start with the screw too high, in which case a gap will be seen between the profile stalk and the straight edge or start low and bring the foot up to meet the straight edge. Adjust until the foot is completely level with the profile face.



Using the slot as a guide, turn the screw one complete turn clockwise. This will space the profile off the corner 1.5mm. If you prefer a greater spacing, each half turn will give 0.75mm clearance. It is VERY important that both setting screws are set to the same distance.



Hold the setting screw with a screwdriver to prevent it turning and pinch the lock nut with a spanner to preserve the adjustment. Repeat the adjustment for the second screw.